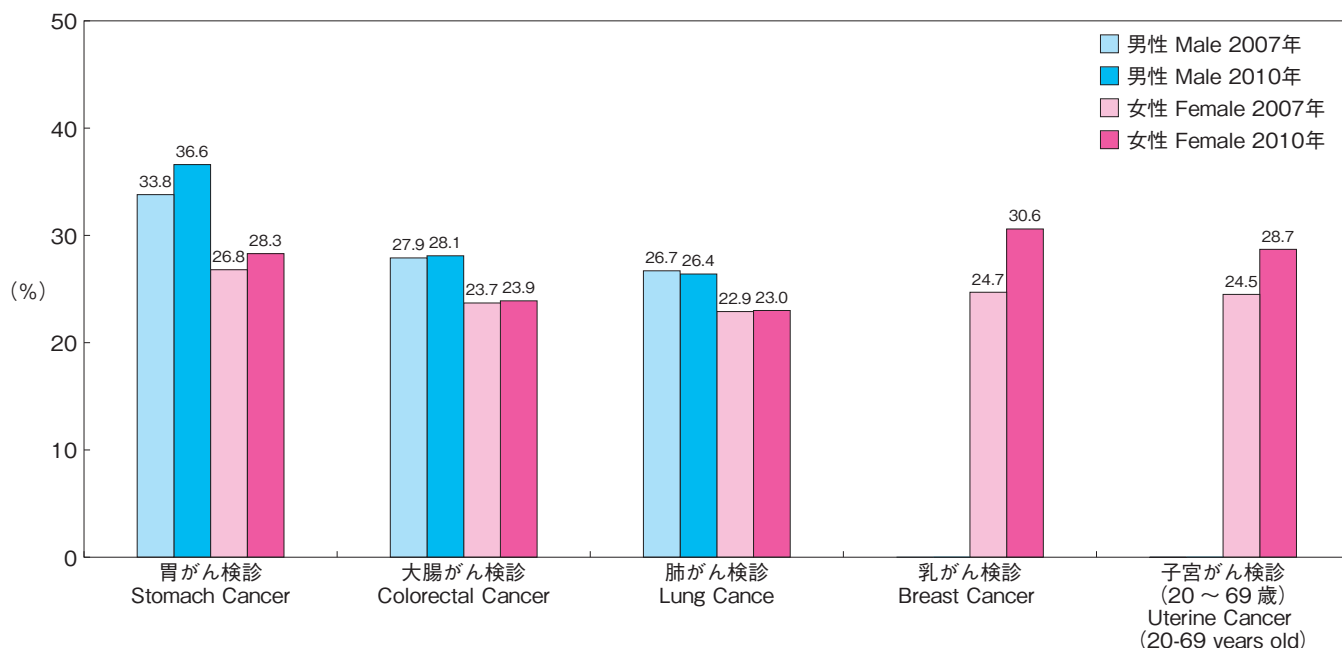
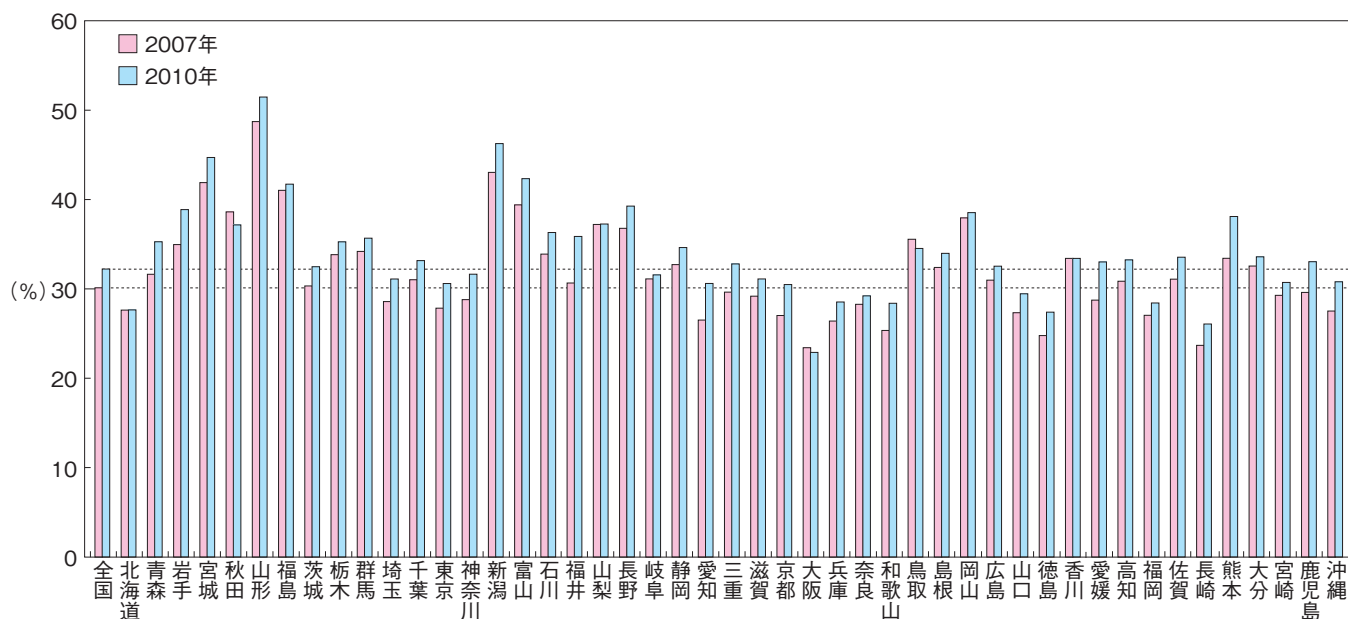


男女別がん検診受診率 (40~69歳)  
Sex-specific Cancer Screening Rate (Males and Females aged 40-69 years old)



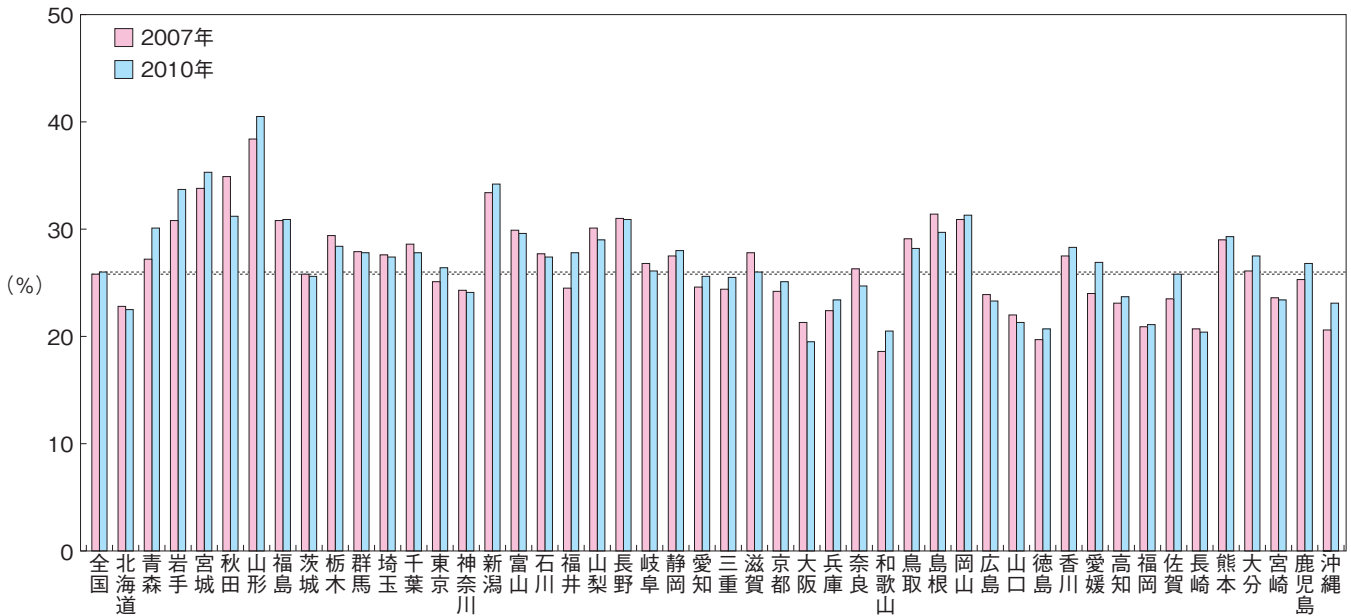
胃がん検診 (40~69歳 男女計)  
Stomach Cancer Screening (Males and Females aged 40-60 years)



資料：国立がん研究センターがん対策情報センター (<http://ganjoho.ncc.go.jp/professional/statistics/statistics.html>)  
Source: Center for Cancer Control and Information Services, National Cancer Center, Japan (<http://ganjoho.ncc.go.jp/professional/statistics/statistics.html>)

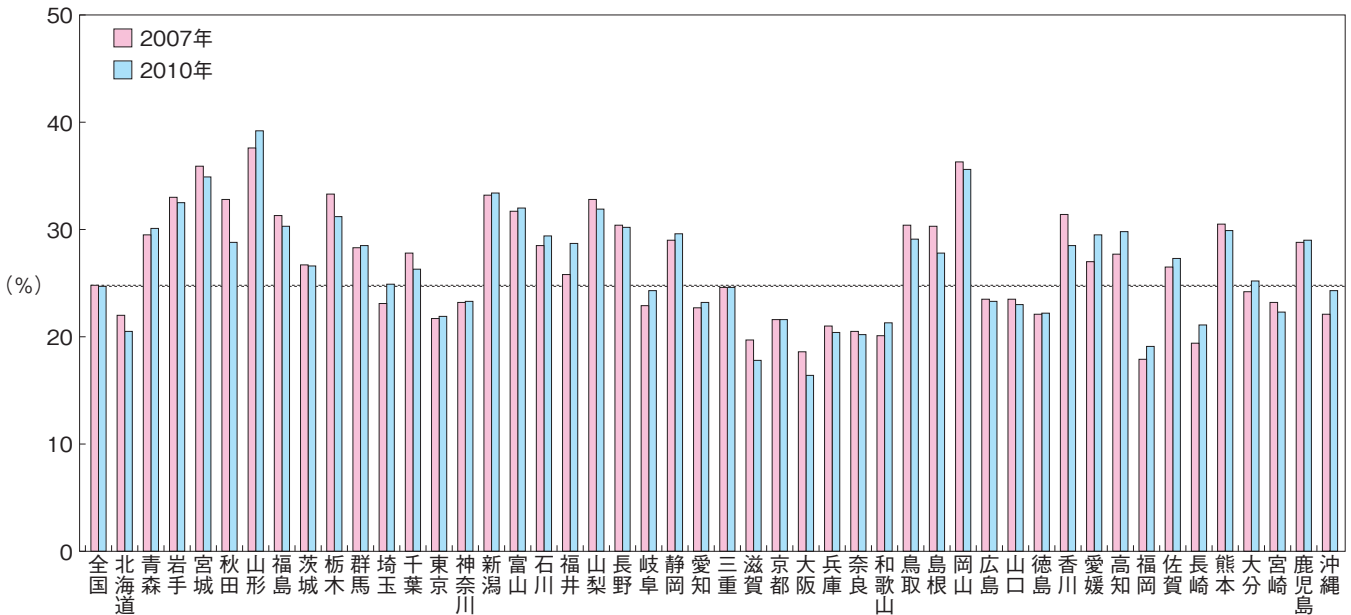
大腸がん検診(40~69歳 男女計)

Colorectal Cancer Screening (Males and Females aged 40-69 years)

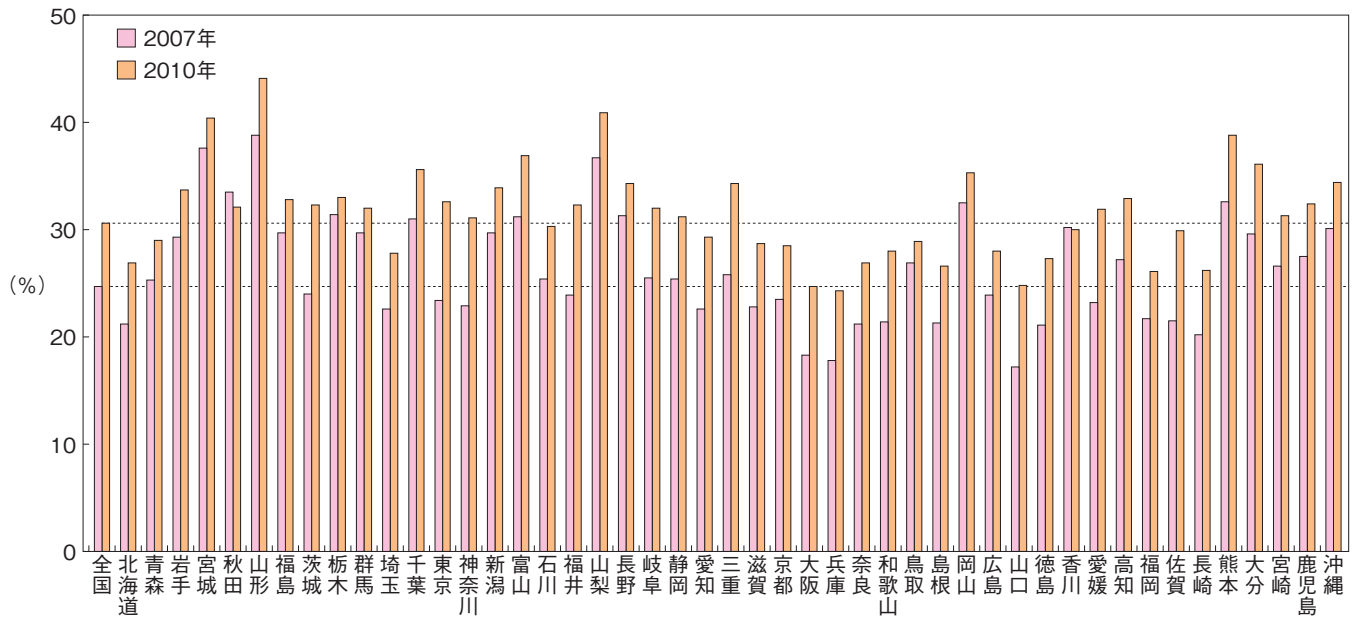


肺がん検診(40~69歳 男女計)

Lung Cancer Screening (Males and Females aged 40-69 years)



乳がん検診(40~69歳 女性)  
Breast Cancer Screening (Females aged 40-69 years)



子宮がん検診20~69歳 女性)  
Uterine Cancer Screening (Females aged 20-69 years)

